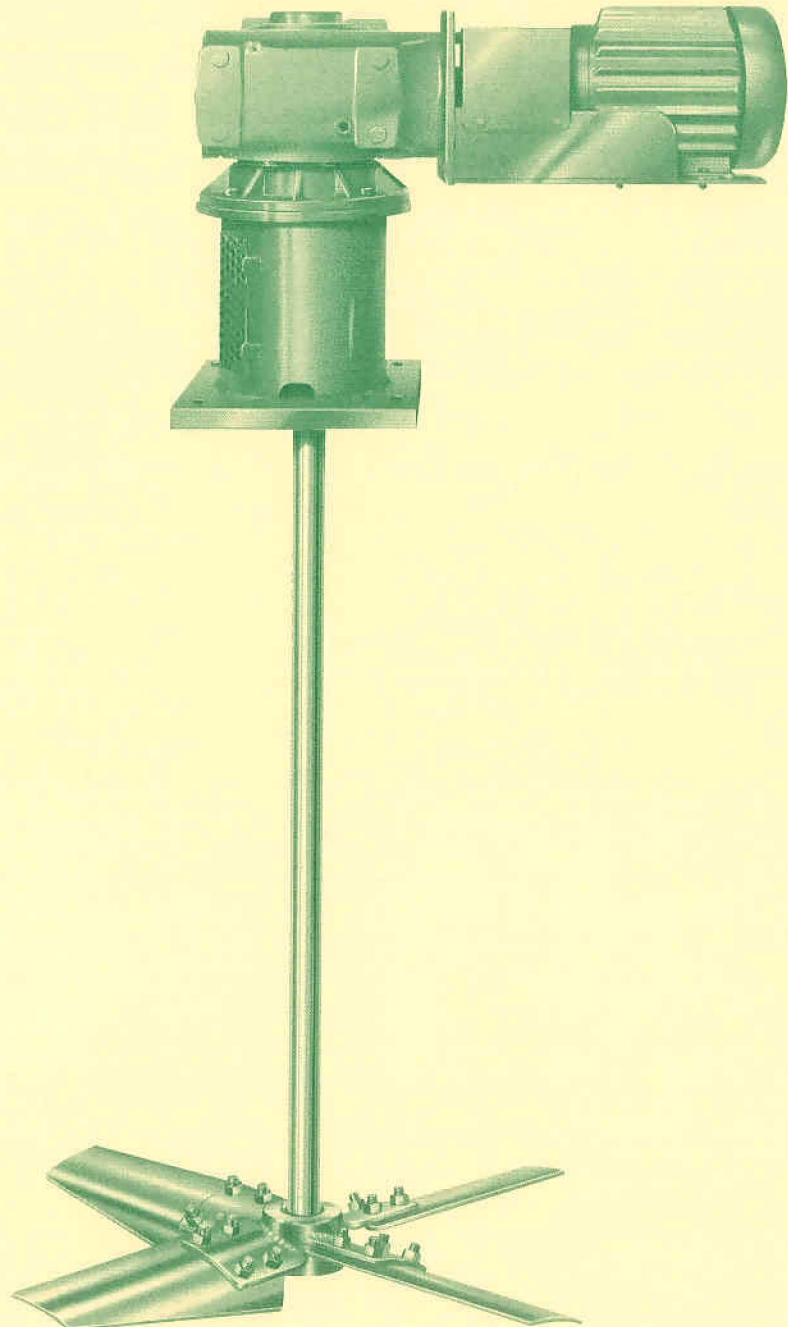


SERVICE INSTRUCTIONS

TURBINE MIXERS



3131 Casitas Avenue
Los Angeles, California 90039
Phone: (323) 664-1941 • FAX: (323) 660-5677
www.mixmor.com





SERVICE INSTRUCTIONS

TURBINE MIXER MODEL TOB
DRIVE SERIES 'L'
MANUAL NO. 05-47821

CUSTOMER:

P.O. NO.:

ITEM NO.:

MIXER MODEL NO.:

MIXER SERIAL NO.:

DRIVE SERIES & SIZE:

INPUT ASSEMBLY PARTS NO:

MIXER SHAFT SPEED:

SHAFT COUPLING DESIGN:

DATE:

MIXMOR
3131 CASITAS AVENUE
LOS ANGELES, CA 90039
TELE: 323.664.1941
FAX: 323.660.5677
E-MAIL: info@mixmor.com

TABLE OF CONTENTS

	<u>PAGE</u>
FOREWORD.....	1
GENERAL INFORMATION.....	1
HANDLING INSTRUCTIONS.....	2
SAFETY	
HANDLING	
INSTALLATION INSTRUCTIONS.....	3-7
STORAGE	
LOCATION	
MOUNTING	
GEAR REDUCER	
FLEXIBLE COUPLING	
MIXER SHAFT	
IMPELLER	
FLANGE COUPLING DWG. NO. 05-08505	
HOLLOW SHAFT ASSEMBLY DWG. NO. 05-47822	
IMPELLER DRAWING NO. 05-03915 & 05-09023	
STEADY BEARING.....	8
INSTALLATION	
DRAWING NO. 05-09794	
GEAR REDUCER LUBRICATION.....	9-11
FILL LEVEL & DRAIN PLUGS	
LUBRICANT	
LUBRICATION CAPACITY	
AUTOVENT PLUG	
MAINTENANCE	
OIL SPECIFICATIONS	
AUTOMATIC LUBRICATOR	
START-UP INSTRUCTIONS.....	12
GEAR REDUCER.....	13-21
PREVENTATIVE MAINTENANCE	
TROUBLE SHOOTING	
FLEXIBLE COUPLINGS	
OIL LEAKAGE PROTECTION CHAMBER	
DRIVE SERIES L PARTS DWG. NO. 05-47754	
INPUT ASSEMBLY PARTS DWG. NO. 05-47823	
INPUT ASSEMBLY PARTS DWG. NO. 05-47824	
INPUT ASSEMBLY PARTS DWG. NO. 05-47755	
MAINTENANCE RECORD	
 MIXER CERTIFIED DRAWING	

FOREWORD

The information contained in this service instruction manual covers MixMor Model TOB Mixers with 'L' Series drive.

The front page of this manual and the certified drawing gives the model and drive type and size of your mixer.

We have included information in this manual that covers installation, start-up, service, and trouble shooting to assure years of reliable mixer service. Should questions or problems occur that are not covered in this manual, consult your local representative or phone MixMor at our Los Angeles, California plant (323) 664-1941.

GENERAL INFORMATION

When apparent or suspected damage has been found on equipment, during transport from factory to user, both the carrier and MixMor must be notified immediately.

When receiving equipment, a check should be made to determine whether all inventoried parts are still in the shipment. Any discrepancy should immediately be reported to both the carrier and MixMor, if claim is to be made.

MixMor mixers do not require the service of a factory engineer upon installation. This service is not included in the price of the unit; therefore, it is to be furnished, it must be agreed upon, in writing, between MixMor and the purchaser.

MixMor warranty becomes void if the unit sold is not operated within the rating and mixing service conditions for which it was specifically sold. The purchaser shall take all necessary precautions to eliminate all external destructive conditions, including unusual variable loads affecting the critical speed of the system, severe shock loading, mechanical or thermal overloads and other conditions of which MixMor was not fully advised. The mixer must be installed and maintained in accordance with this service manual.

MixMor must be informed within thirty days, for warranty to cover the mixer in the event of any malfunction during the warranty period.

All personnel directly responsible for operation of equipment must be instructed on proper installation, maintenance and safety procedures.

Design improvements are implemented on a continuous basis. Therefore, we reserve the right to make change without notice. If any questions arise regarding the data or information in this manual, please contact MixMor in Los Angeles, California.

HANDLING INSTRUCTIONS

SAFETY

When handling or working on a MixMor mixer, safety precautions must always be remembered and followed. The proper tools, clothing and methods of handling should be used to prevent any accidents.

This manual lists a number of safety precautions. Follow them. Insist that your employees do the same. Safety precautions and equipment have been developed from past accidents. Follow and use them for your protection.

HANDLING

Do not support or lift the mixer in a manner, which could create excessive stress on parts or shaft extensions. Never allow shafting to support any weight of the drive assembly. A slightly bent shaft will cause extreme mixer vibration. Support the mixer with a lifting sling to prevent damaging of any external mixer parts. Handle the mixer shaft carefully and always place it in a horizontal position, supporting it at several points.

INSTALLATION INSTRUCTIONS

STORAGE

If installation of the mixer and/or operation is to be delayed for more than one month after factory shipment, special rust preventative precautions should be taken. The precautions may be taken by the user or by the factory if full information concerning storage conditions is provided at the time of ordering. When prolonged storage is unavoidable, it should be indoors and preferable in a dry environment having a relatively constant temperature to avoid condensation problems. Always store the mixer shaft in a horizontal position, supporting it at several points.

LOCATION

The mounting location of the mixer has a definite effect on the flow pattern within the tank. The recommended location has been made with regard to your particular application and should be carefully followed to obtain optimum results.

MOUNTING

Securely bolt down the mixer to its foundation using proper size bolts, which will fit mounting holes. Bolts should be SAE Grade 5 or equivalent.

GEAR REDUCER

MixMor L Series drives are filled with oil from the factory. Consult the sticker adjacent to the fill plug to determine the type of lubricant installed at the factory. Standard lubricant is ISO VG220 mineral-based oil. Refer to the Gear Reducer Lubrication instructions for additional information (pages no. 9 thru 11). Mixers with motor frame sizes 320TC thru 360TC utilize an automatic pressure lubricator for the input assembly bearing, which must be installed and activated prior to start-up. Refer to Gear Reducer Lubrication instructions (pages 9 thru 11).

FLEXIBLE COUPLING

The mixer uses a flexible coupling to connect the motor output shaft to the gear reducer input shaft. After start-up, the mixers that utilize foot-mounted motors should be run until the operating temperature stabilizes. Coupling alignment should then be checked and any necessary corrections made. It is good to check the alignment, once more, after operating under a load for two or three weeks. Refer to page 15.

MIXER SHAFT – Refer to manual front page for supplied coupling design.

Flange Coupling Design

Refer to drawing no. 05-08505, page 5. Handle the shaft carefully and always place it in a horizontal position, supporting it at several points. Slide the tapered end of the shaft (12) through the mixer baseplate or mounting flange and into the flange coupling (10). Insert key (11) into the shaft and coupling keyway. Place the keeper plate (6) into the recess in the flange coupling and tighten socket flat head cap screw (13) to the recommended torque shown on the drawing. Tighten socket head set screw (9). Check the coupling rabbet faces for nicks or burrs. Raise the mixer shaft and tighten hex head cap screw (8) to the recommended torque.

Hollow Shaft Design

Refer to drawing no. 05-47822, page 6. Handle the shaft carefully and always place it in a horizontal position, supporting it at several points. Slide the shaft (4) through the mixer baseplate (3) and into the gear reducer hollow shaft (2) until the machined step or thrust collar is against the bottom of the hollow shaft. Align the shaft keyways and insert key (6) into the hollow shaft. Place the keeper plate (5) on the top of the hollow shaft and tighten socket flat head cap screw (1) to the recommended torque shown on the drawing. Replace the hollow shaft cover.

IMPELLER

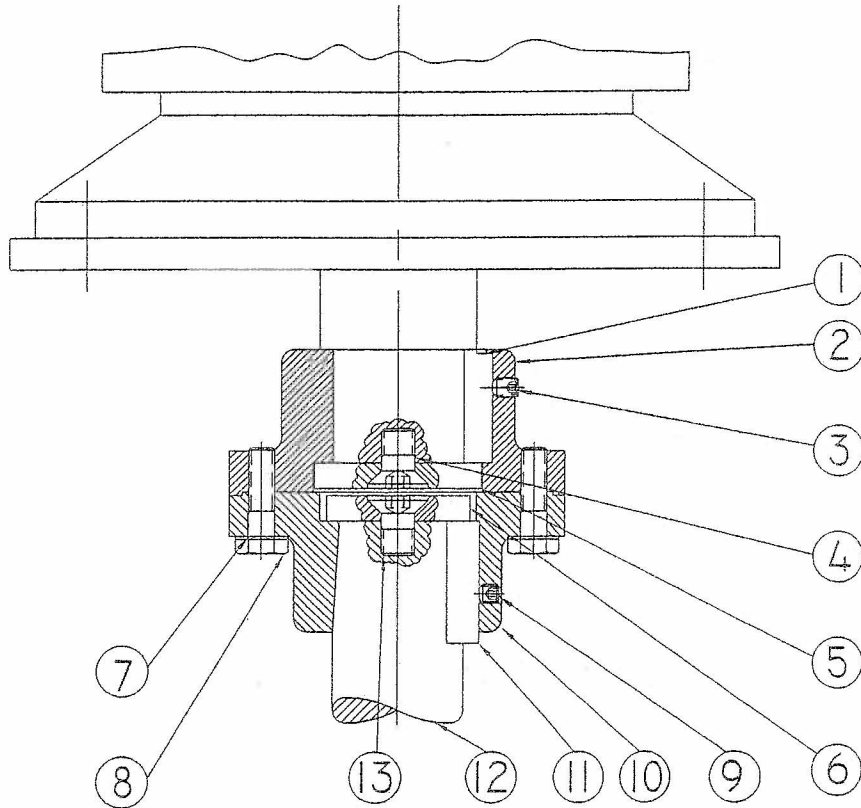
PBT4 & VFBT4 Impellers

Refer to drawing no. 05-47830, page 7. The impeller hub is keyed and set screwed to the shaft. The shaft may be spot drilled for the set screws on larger, heavier impellers. The impeller assembly is statically balanced at the factory. The bolted assembly impeller will have the blades and hub ears match marked for assembly in the field.

FM3, FM4, FM3W & FM4W Impellers

Refer to drawing no. 05-47831, page 7. The impeller hub is keyed and set screwed to the shaft. The shaft may be spot drilled for the set screws on larger, heavier impellers.

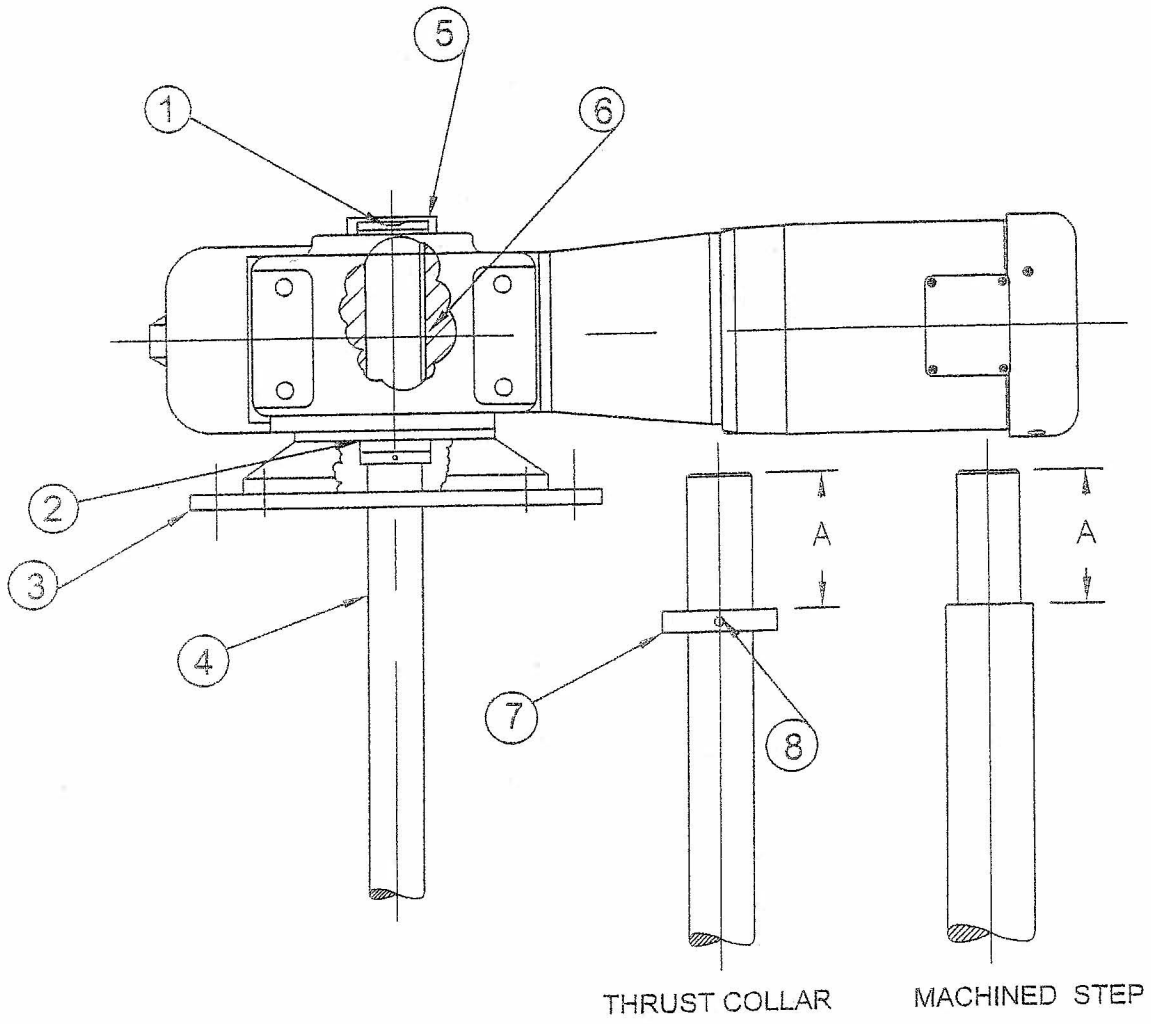
FLANGE COUPLING ASSEMBLY
Dwg. No. 05-08505



RECOMMENDED TIGHTENING TORQUES, FT./LBS.	
BOLT SIZE	TORQUE
1/2"-13	85
1/2"-20	90
5/8"-11	170
5/8"-18	180
3/4"-10	300
3/4"-16	325
7/8"-9	485
7/8"-14	525
1" - 8	730
1" - 12	790

ITEM NO.	DESCRIPTION
1	KEY
2	REDUCER COUPLING
3	SET SCREW
4	SOCKET FLAT HEAD CAP SCREW
5	KEEPER PLATE
6	KEEPER PLATE
7	LOCK WASHER
8	HEX HEAD SET SCREW
9	SOCKET HEAD SET SCREW
10	SHAFT COUPLING
11	KEY
12	MIXER SHAFT
13	SOCKET FLAT HEAD CAP SCREW

MIXER SHAFT ASSEMBLY
Dwg. No. 05-47822

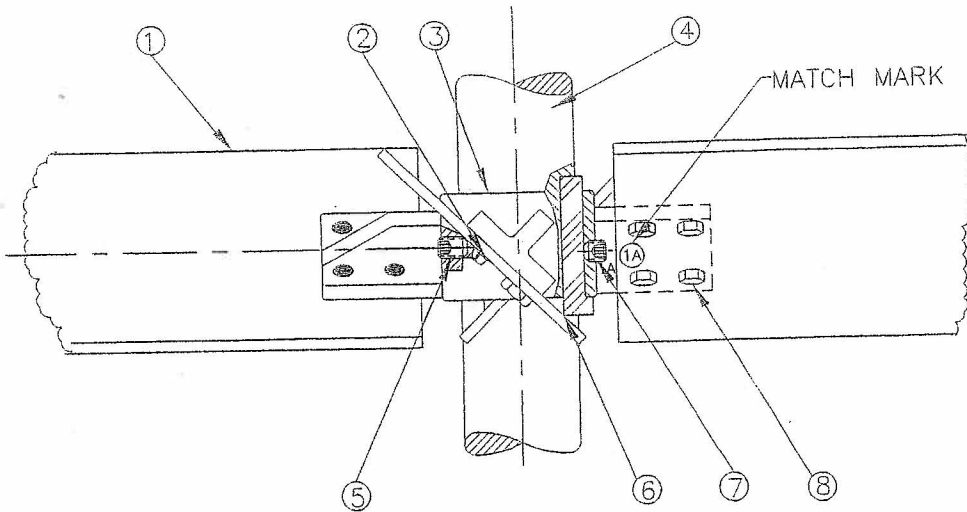


PART NO.	DESCRIPTION
1	SOCKET HEAD FLAT SCREW
2	HOLLOW BORE SHAFT
3	BASEPLATE
4	MIXER SHAFT
5	KEEPER PLATE
6	KEY
7	THRUST COLLAR
8	SOCKET HEAD SET SCREW (2)

DRIVE SIZE	TORQUE FT./LBS.
L22	170
L32	170
L42	300
L52	300
L62	300
L82	485
L86	485

DRIVE SIZE	'A' DIM.
L22	10.47"
L32	11.42"
L42	14.25"
L52	17.95"
L62	20.63"
L82	24.21"
L86	29.37"

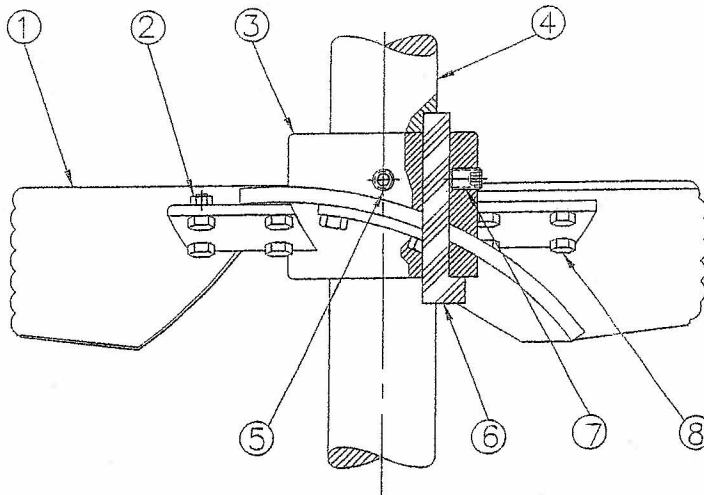
PBT4 & VFBT4 IMPELLERS
Dwg. No. 05-47830



Shafts may be spot drill for larger impeller set screws

PART NO.	DESCRIPTION	PART NO.	DESCRIPTION
1	BLADE	5	SOCKET HEAD SET SCREW
2	LOCK WASHER	6	HOOK KEY
3	HUB	7	SOCKET HEAD SET SCREW
4	SHAFT	8	HEX HEAD CAP SCREW

FM3, FM4, FM3W & FM4W IMPELLERS
Dwg. No. 05-47831



Shafts may be spot drill for larger impeller set screws

PART NO.	DESCRIPTION	PART NO.	DESCRIPTION
1	BLADE	5	SOCKET HEAD SET SCREW
2	HEX NUT	6	HOOK KEY
3	HUB	7	SOCKET HEAD SET SCREW
4	SHAFT	8	HEX HEAD CAP SCREW

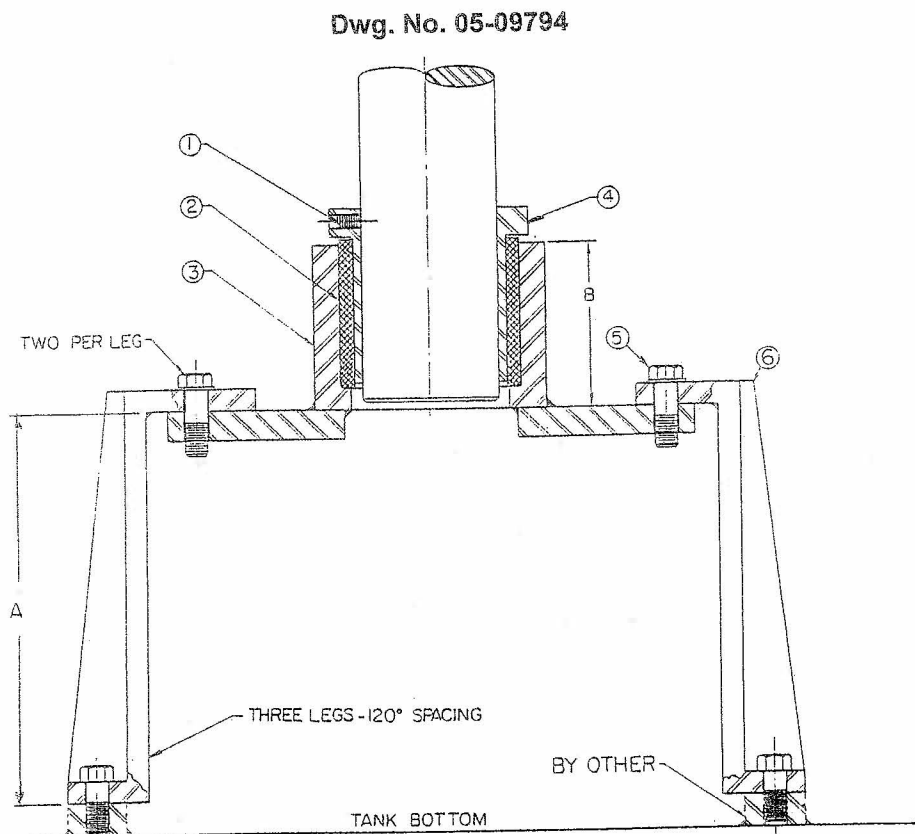
STEADY BEARING

INSTALLATION – Refer to Dwg. No. 05-09794

The steady bearing must be centered on the mixer shaft's axis of rotation. To assure that the steady bearing is properly located and to minimize bearing preload, it must be installed after the mixer is mounted onto the tank and after the shaft is installed.

To find that shaft's axis of rotation, attach a marker that will contact that tank bottom to the end of the shaft. Remove the motor fan cover and rotate the motor fan. This will draw a circle on the tank bottom. Install the steady bearing in the center of this circle.

The shaft runout will differ depending upon the shaft length and diameter.



PART NO.	DESCRIPTION
1	SOCKET HEAD SET SCREW
2	BUSHING *
3	CARTRIDGE
4	SHAFT WEAR SLEEVE *
5	HEX HEAD CAP SCREW
6	STAND

* Recommended Spare Parts

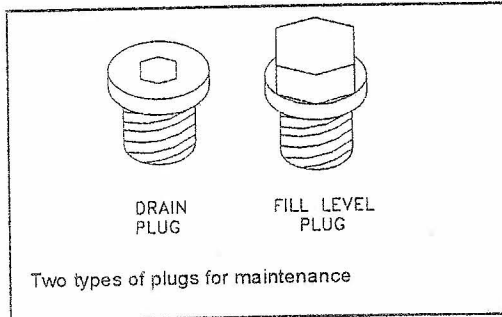
SHAFT DIA.	A	B
2-2 1/4"	6"	3"
2 1/2"-3"	7"	3 1/2"
3 1/2"-4"	8"	4 1/2"
4 1/2"-5"	8 1/2"	5 1/2"
5 1/2"-6"	9"	6 1/2"

Dimensions are approximate

GEAR REDUCER LUBRICATION

FILL LEVEL & DRAIN PLUGS

The drain plugs are metric socket head cap screws. They will be located at the lowest part of the gearbox for ease of draining. The fill level plug is a hex head cap screw. It will be located between the Autovent and drain plug. Both types of plugs will have gaskets included to prevent oil from leaking.



LUBRICANT

All NORD reducers are shipped from the factory properly filled with lubricant and all plugs are installed according to the mounting position given on the reducer nametag. Acceptable oil fill level is within 1/2 inch of the bottom of the fill plug threads.

OPERATION AND MAINTENANCE CHECKLIST

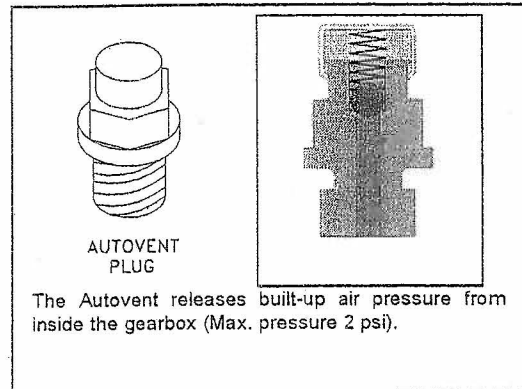
1. Operate the equipment as it was intended to be operated
2. Do not overload.
3. Run at correct speed.
4. Maintain lubricant in good condition and at proper level.
5. Dispose of used lubricant in accordance with applicable laws and regulations.
6. Apply proper maintenance to attached equipment at prescribed intervals recommended by the manufacturer.
7. Perform periodic maintenance of the gear drive as recommended by NORD.

LUBRICATION CAPACITY

DRIVE SIZE	QUARTS
L22	2.11
L32	3.49
L42	6.87
L52	12.15
L62	20.08
L82	40.15
L86	56.00

AUTOVENT PLUG

The Autovent plug is brass in color and will be located at the highest point on the gearbox. It operates like a check-valve to allow the reducer to relieve internal pressure while preventing lubricant contamination during cooling. A spring presses a ball or plunger against a machined orifice until pressure exceeds 2 psi. Above 2 psi the air is allowed to escape depressurizing the gearcase. When internal pressure drops below 2 psi, the autovent re-seals closing the unit to the outside environment. After shutdown, the reducer cools along with the air inside the reducer. The unit will temporarily maintain a slight vacuum until normalization occurs. NORD Gear supplies an Autovent as a standard feature.



MAINTENANCE

Mineral oil should be changed every 10,000 hours or after two years. For synthetic oils, the lubricant should be changed every 20,000 hours or after four years. In case of extreme operating conditions (e.g. high humidity, aggressive environment or large temperature variations), shorter intervals between changes are recommended. If in doubt about the intervals, consult MixMor or your lubricant supplier.

OIL SPECIFICATIONS

MixMor L Series drives are filled with oil from the factory. Consult the sticker adjacent to the fill plug to determine the type of lubricant installed at the factory. Standard lubricant is ISO VG220 mineral-based oil. However, some units have special lubricants designed to operate in certain environments or to extend the service life of the lubricant. If in doubt about which lubricant is needed, consult MixMor.

STANDARD OIL - ISO VG220

Ambient Temperature	Formulation	Oil Manufacturer	Oil Brand Name	Origin of Gearbox Assembly
20 to 104°F (-5 to 40°C)	Mineral	Texaco	Meropa 220	NORD USA
20 to 104°F (-5 to 40°C)	Mineral	Shell	Omala EP 220	NORD Canada

OPTIONAL LUBRICANTS

Ambient Temperature	Formulation	Oil Manufacturer	Oil Brand Name	Origin of Gearbox Assembly
14 to 176°F (-10 to 80°C)	Synthetic	Texaco	Pinnacle EP680	NORD USA
14 to 176°F (-10 to 80°C)	Synthetic	Shell	Omala HD 680	NORD Canada
-13 to 140°F (-25 to 60°C)	Synthetic	Texaco	Pinnacle EP220	NORD USA
-13 to 140°F (-25 to 60°C)	Synthetic	Shell	Omala HD 220	NORD Canada
-40 to 50°F (-40 to 10°C)	Synthetic	Texaco	Pinnacle EP32	NORD USA
-40 to 50°F (-40 to 10°C)	Synthetic	Shell	Omala HD 32	NORD Canada
20 to 104°F (-5 to 40°C)	Food Grade	Chevron	FM ISO 220	NORD USA
20 to 104°F (-5 to 40°C)	Synthetic Food Grade	OilJAX	Magnaplate 85W140-FG	NORD Canada
5 to 125°F (-20 to 50°C)	Fluid Grease	Mobil	Mobilux EP023	NORD USA
-30 to 140°F (-35 to 60°C)	Synthetic Fluid Grease	Mobil	Mobilith SHC 007	NORD USA
-30 to 140°F (-35 to 60°C)	Synthetic Fluid Grease	Shell	Tivela compound A	NORD Canada

STANDARD BEARING GREASE - NLGI 2EP lithium

Ambient Temperature	Formulation	Grease Manufacturer	Grease Brand Name	Origin of Gearbox Assembly
-20 to 140°F (-30 to 60°C)	Mineral	Texaco	Multifak EP2	NORD USA
-20 to 140°F (-30 to 60°C)	Mineral	Shell	Cybernia RA/C3	NORD Canada

OPTIONAL BEARING GREASE

Ambient Temperature	Formulation	Grease Manufacturer	Grease Brand Name	Origin of Gearbox Assembly
-58 to 230°F (-50 to 110°C)	Synthetic	Texaco	Starfak 2202	NORD USA
-58 to 230°F (-50 to 110°C)	Synthetic	Shell	Aero Shell	NORD Canada
5 to 230°F (-20 to 110°C)	Food Grade	Lubriplate	SIF 1	NORD USA

AUTOMATIC LUBRICATOR

This lubricator is used only on input assembly no. 05-47755, for motor frame sizes 320TC thru 360TC, refer to page 20 for assembly details.

Principle of Operation

After tightening the plastic activating screw, the Zinc-Molybdenum pellet drops into the Citric Acid electrolyte. The chemical reaction builds up pressure that causes the piston to move forward. The lubricant is continuously injected into the lubrication point. At the end of the lubrication period, the discharge indicator cap becomes clearly visible indicating the lubricant has been fully discharged. The lubrication period is determined and defined by the color of the activating screw.

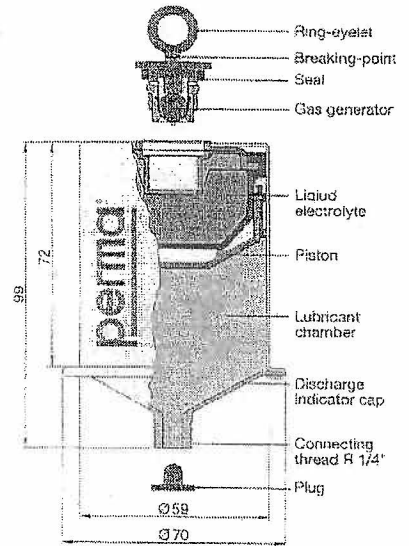
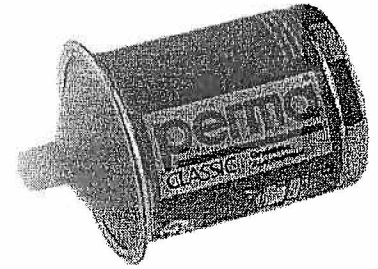
For the bearings used in NORD Gear products, a 12 month lubrication period is standard, indicated by a gray activating screw. This applies for an average operating time of 8 hours/day. For longer operating times, the replacement interval decreases to 6 months. Lubrication canisters are also available for cold temperature applications. Contact NORD Gear for more information.

Assembly Instructions

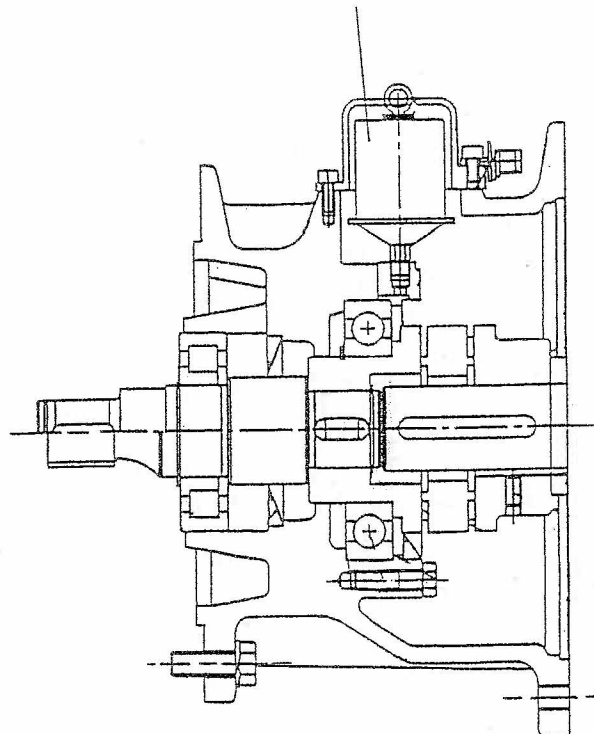
1. Remove the plug from the male connecting thread.
2. Screw male fitting into bearing housing within Input Adapter.
3. Insert activating screw into end of canister. Tighten until the ring-eyellet breaks off.
4. Replace every twelve months.

Perma Classic Specifications

Standard Lubricant	Klüber Isoflex Topas NB52 (synthetic)
Lubricant Volume	120 mL (4 oz.)
Operating Temperature Range	0°C to 40°C (32°F to 104°F)
Discharge Time	12 months at 25°C (77°F)
Operating Position	Independent of mounting position, operates even under water.
Male Connecting Thread	1/4" NPT



Automatic Lubricator



Input Assembly No. 05-47755

START-UP INSTRUCTIONS

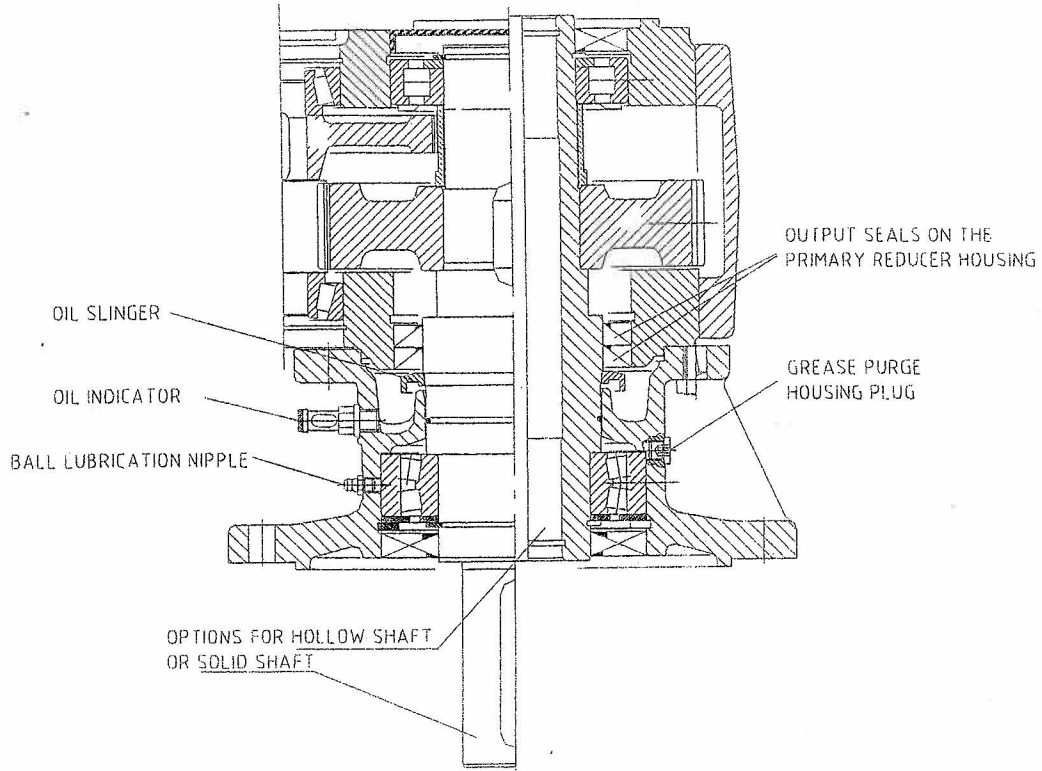
When starting up any new piece of equipment, it is wise to proceed cautiously. Even though the best installation practices are followed, the possibilities of errors or omissions always exist. MixMor recommends that before the initial start-up, the following checklist should be followed:

1. Has all accessory equipment such as: breathers, level indicators, pressure gauges, switches, etc., been mounted? It is often necessary to box these items separately to prevent damage or loss in shipment.
2. Are mounting bolts tight? Check all external bolts, screws, accessories, etc., to make sure they have not become loose in shipping and handling.
3. Have all couplings been mounted to shaft extensions correctly with keys and fasteners in place?
4. Have bearings been greased?
5. Have couplings been tightened properly? Have necessary guards and safety devices been installed at all hazardous locations?
6. Has the gear reducer lubricant been checked as outlined in the GEAR REDUCER LUBRICATION section? Before start-up, mixers with motor frames 320TC thru 360TC, must have the input assembly automatic pressure lubricator installed and activated.
7. Have required electrical connections been made? Units should be wired in accordance with motor manufacturers' wiring diagram on the motor.
8. Have required piping connections been made?
9. Have mixer shaft seal instructions been followed?

Mixers are test run at the factory. However, during start-up, the following procedures are recommended:

1. If the reducer is equipped with heaters for cold temperature operation, turn on heaters and allow to rise to at least 65°F.
2. Start unit slowly under as light a load as possible. Check rotation of the shaft against rotation arrow on the mixer housing. If necessary, reverse electrical leads on motors to have shaft rotation conform to direction shown on mixer.
3. Prime mover electrical starting equipment should be arranged to start unit as slowly as possible to avoid severe impact loads.
4. As the mixer is brought up to normal operating speed, it should be checked continuously for unusual sounds, excessive vibrations, excessive heat or leakage. If any of these develop, the unit should be shut down immediately and the cause determined and corrected. The operating temperature of the mixer at the hottest point should not exceed 200°F.
5. If possible, the mixer should be operated under a light load (approximately half-load) for one or two days to allow final breaking-in of gears. After this period, the unit can be operated under normal load.
6. After the first 48 hours of operation, all external housing and mounting fasteners should be checked for tightness. Loose fasteners can cause alignment problems and excessive wear.
7. The alignment of the flexible coupling should be checked and any necessary corrections made. It is good practice to check the alignment once more after operating under a load for two or three weeks.

LOWER OUTPUT SHAFT BEARING



The lower output shaft bearing is grease lubricated and is shipped from the factory lubricated with standard NLGI 2EP Lithium grease. It should be re-lubricated after every 5,000 hours of operation or a minimum of every 10 months.

Remove the grease purge housing plug and hand pump grease thru the ball lubrication nipple until grease flows out the purge port. Do not mix formulations.

STANDARD BEARING GREASE

Ambient Temperature	Formulation	Name	Manufacturer
-20 to 140°F	Mineral	NLGI 2EP Lithium	Generic

OPTIONAL BEARING GREASES

Ambient Temperature	Formulation	Brand Name	Manufacturer
-40 to 230°F	Synthetic	Aeroshell 6	Shell
-40 to 230°F	Food Grade Synthetic	SFL1	Lubriplate

GREASE CAPACITY

Drive Series & Size		Re-Lubrication Volume
F12 thru F52	L12 thru L52	1 oz.
F62 thru F82	L62 thru L82	2 oz.
F92	L86 thru L92	3 oz.

CHECKLIST		
OBSERVATION	POSSIBLE SOURCE	ACTION
NOISE	1) Bearing failure	Replace bearings
	2) Rust inside drive	Rust can be caused by entrance of water or humidity. Flush And thoroughly clean drive. Take steps to prevent further Entrance of water and use a lubricant with good rust-inhibiting Properties.
	3) Extended shut-down or improper storage	When drives are not properly prepared for extended shut-Down or storage in a moist atmosphere or a temperature Condition which will cause condensation, destructive rusting Of bearing, gears and shafts/seals will take place. Clean and Replace parts as required.
	4) Overloaded	Overloading can cause excessive separation of gear teeth And loud operation. Refer to OVERHEATING , Source No. 8
	5) Refer to VIBRATION , Source No.'s 3 & 4	
	6) Refer to OVERHEATING , Source No.'s 1,2,3,4,5 & 6	
OIL LEAKING	1) Worn oil seals	Replace defective seals
	2) Oil in drywell leaking at output shaft	During storage or when mixer is being installed, with oil in the Reducer, oil can flow over the drywell and through the output Shaft seal. Check if oil level is too high. Remove lower Bearing assembly and drain drywell.
	3) Plugged breather	Breather must be free of any obstructions. Clean breather as Required.
	4) Gear case/ cap joints	Tighten fasteners. If this does not stop leakage, remove covers or caps, clean surfaces and replace gaskets or apply new sealing compound.
	5) Drain plugs, sight glasses or pipe fittings	Remove and clean all fittings. Apply a pipe joint sealant and re-install fittings.

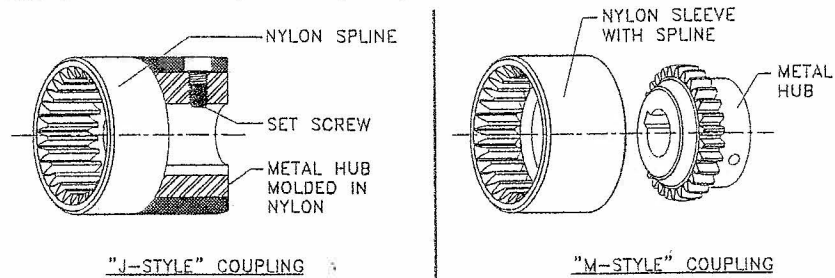
FLEXIBLE COUPLINGS

Depending on the size of the input adapter to the gearbox, NORD Gear supplies two styles of couplings - BoWex[®] (gear tooth) and Rotex[®] (jaw) couplings.

BoWex[®] Couplings

NORD C-face adapter input shafts have a machined spline on the end. NORD incorporates two styles of BoWex[®] couplings, the "J" and "M" styles. The "J" style is a one-piece coupling with a metal hub and nylon spline. The "M" style is a two piece coupling - the metal hub and a nylon sleeve. Nylon and steel components allow them to operate in high ambient temperatures without lubrication or maintenance.

- Nylon sleeves resist dirt, moisture, most chemicals and petroleum products
- No lubrication required
- Operating Conditions: -22°F - 195°F (-30°C - 90°C)
- Higher temperature coupling sleeve available up to 250°F (120°C)



BoWex[®] Mechanical Ratings

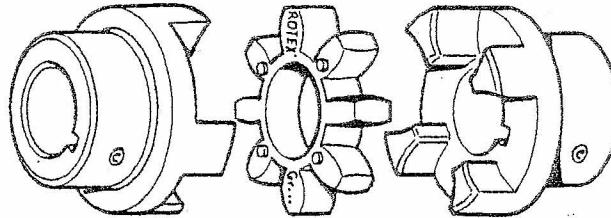
"J" Style

Coupling Type	Available Bore Sizes	Max. Torque	Input
J14	11, 14 mm 5/8 in.	20 Nm 177 lb-in	IEC 63, 71 NEMA 56C
J24	19, 24 mm 5/8, 7/8 in	40 Nm 354 lb-in	IEC 80 NEMA 56C, 140TC
J28	28mm 1 1/8 in	90 Nm 797 lb-in	IEC 100, 112 NEMA 180TC

"M" Style

Coupling Type	Available Bore Sizes	Max. Torque	Input
M38	38 mm 1 1/8, 1 3/8 in.	160 Nm 1,416 lb-in	IEC 132 NEMA 180TC, 210TC
M42	42 mm 1 5/8 in	200 Nm 1,770 lb-in	IEC 160 NEMA 250TC
M48	48 mm 1 7/8 in	280 Nm 2,478 lb-in	IEC 180 NEMA 280TC

Rotex[®] Couplings



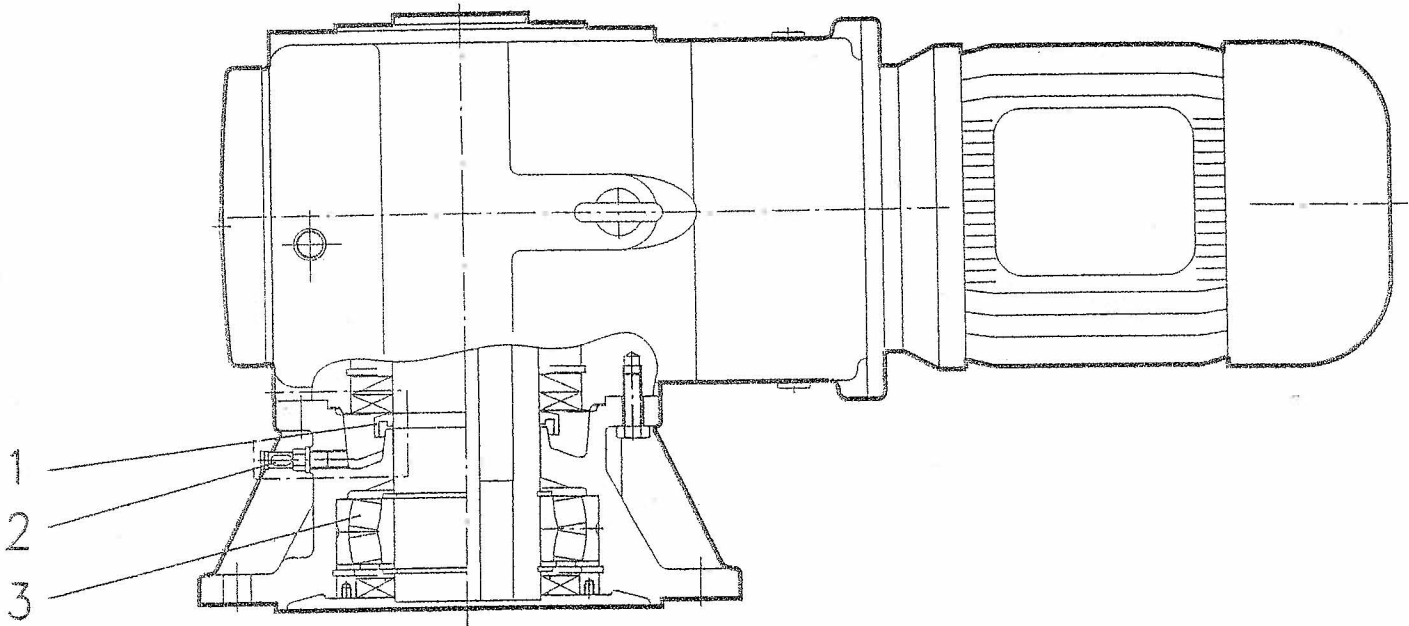
Rotex[®] Mechanical Ratings

Coupling Type	Available Bore Sizes	Max. Torque	C-Face Inputs	Spider
R48	42, 48 mm 1 5/8, 1 7/8 in	620 Nm 5,487 lb-in	IEC 160, 180 NEMA 250T, 280T	Urethane 92 Shore A Hardness Color: Yellow
R65	60 mm 2 1/8, 2 3/8 in	1,250 Nm 11,063 lb-in	IEC 225 NEMA 320T, 360T	
R90	65, 75, 80 mm 2 1/8, 2 3/8 in	4,800 Nm 42,480 lb-in	IEC 250, 280, 315 NEMA 360T, 400TS, 440TS	

OIL LEAKAGE PROTECTION CHAMBER

The output shaft assembly includes an oil leakage protection chamber, which traps any possible oil leakage through the quadrilip™ seal.

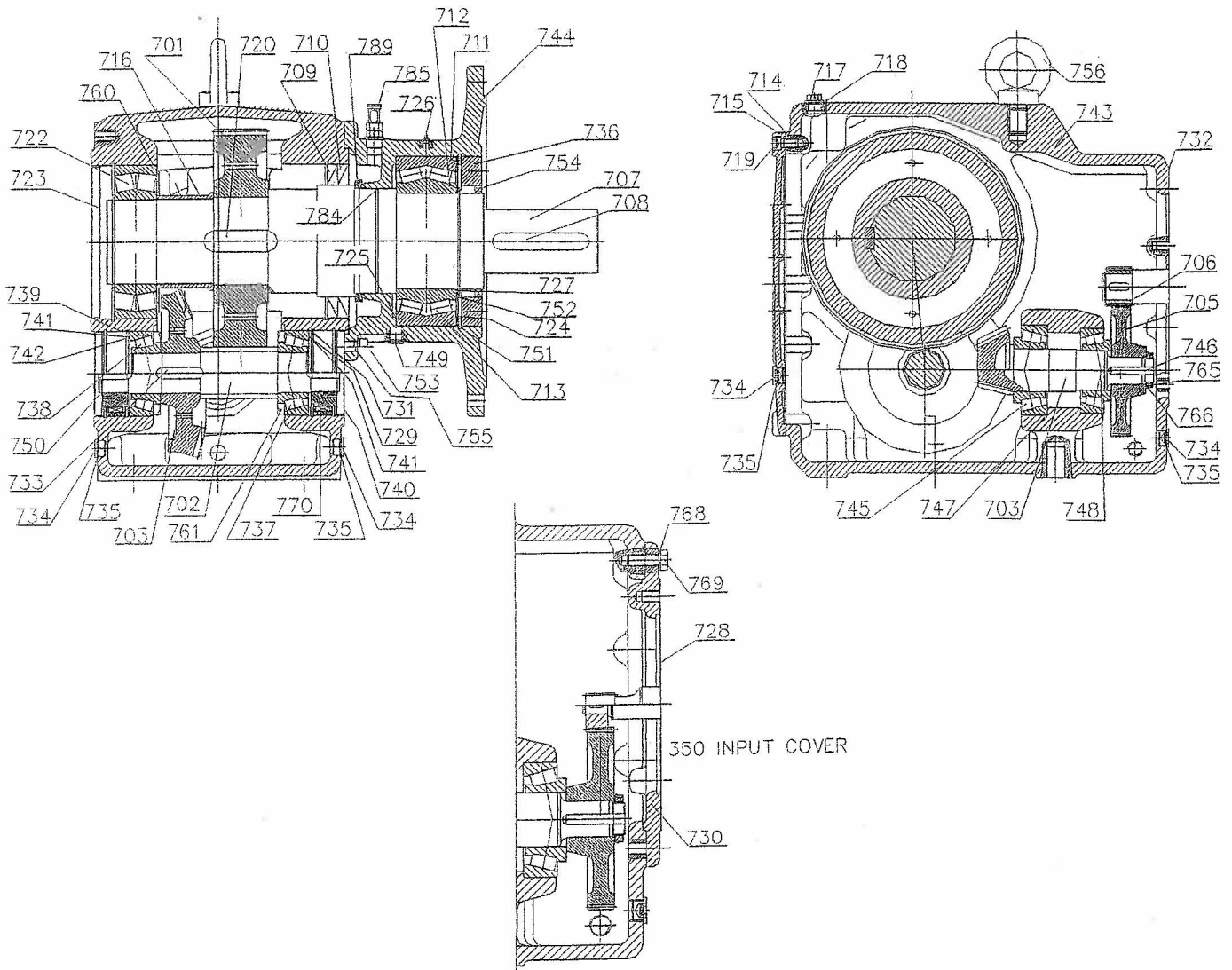
In case of lubricant leakage through the lower seals the lubricant runs over the slinger ring into the protection chamber flange and collects at the lowest point at which an oil indicator is placed. Alternately an oil-sensor can be used or the lubricant can be fed through a relief-pipe in place of the indicator.



ITEM NO.	DESCRIPTION
1	SLINGER RING
2	OIL-INDICATOR
3	SPHERICAL ROLLER BEARING

DRIVE SERIES L PARTS

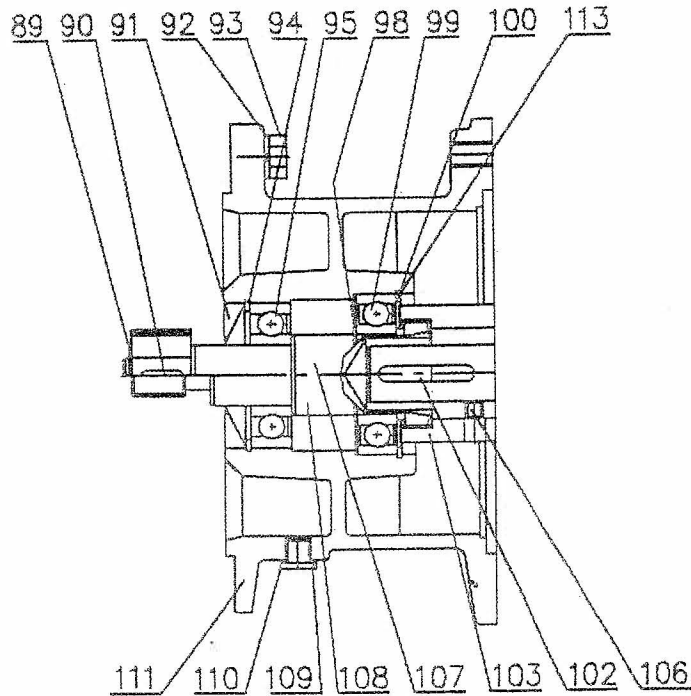
Dwg. No. 05-47754



PART NO.	DESCRIPTION	PART NO.	DESCRIPTION	PART NO.	DESCRIPTION	PART NO.	DESCRIPTION
701	OUTPUT GEAR	718	GASKET	735	GASKET+	751	RETAINING RING+
702	OUTPUT PINION SHAFT	719	SOCKET HEAD CAP SCREW	736	SEAL SLEEVE	752	AXIAL SHIM+
703	BEVEL GEAR SET	720	KEY	737	TAPER ROLLER BEARING+	753	SOCKET HEAD CAP SCREW
705	INPUT GEAR	722	SPHERICAL ROLLER BEARING+	738	TAPER ROLLER BEARING+	754	OIL SEAL+
706	INPUT PINION	723	SEALING PLUG+	739	RETAINING RING+	755	GROOVED PIN
707	OUTPUT SHAFT	724	SPACER	740	SEALING PLUG+	756	FLANGED EYE BOLT
708	KEY	725	AXIAL SHIM+	741	SHIM	760	NILOS RING
709	OIL SEAL+	726	GREASE FITTING	742	SPACER	761	NILOS RING
710	OIL SEAL+	727	RETAINING RING+	743	GEAR CASE	765	SLOTTED ROUND NUT
711	SHIM+	728	GASKET+	744	FLANGE	766	TAB WASHER
712	SHIM+	729	SPACER	745	TAPER ROLLER BEARING+	768	LOCK WASHER
713	SPHERICAL ROLLER BEARING+	730	FLANGE COVER	746	KEY	769	HEX HEAD CAP SCREW
714	GASKET+	731	RETAINING RING+	747	SHIM+	770	BACKSTOP
715	GEAR CASE COVER	732	GASKET+	748	TAPER ROLLER BEARING+	784	'O' RING+
716	SPACER	733	KEY	749	DRAIN PLUG	785	OIL SENSOR
717	AUTO VENT	734	DRAIN PLUG	750	SEALING PLUG+	789	SLINGER RING

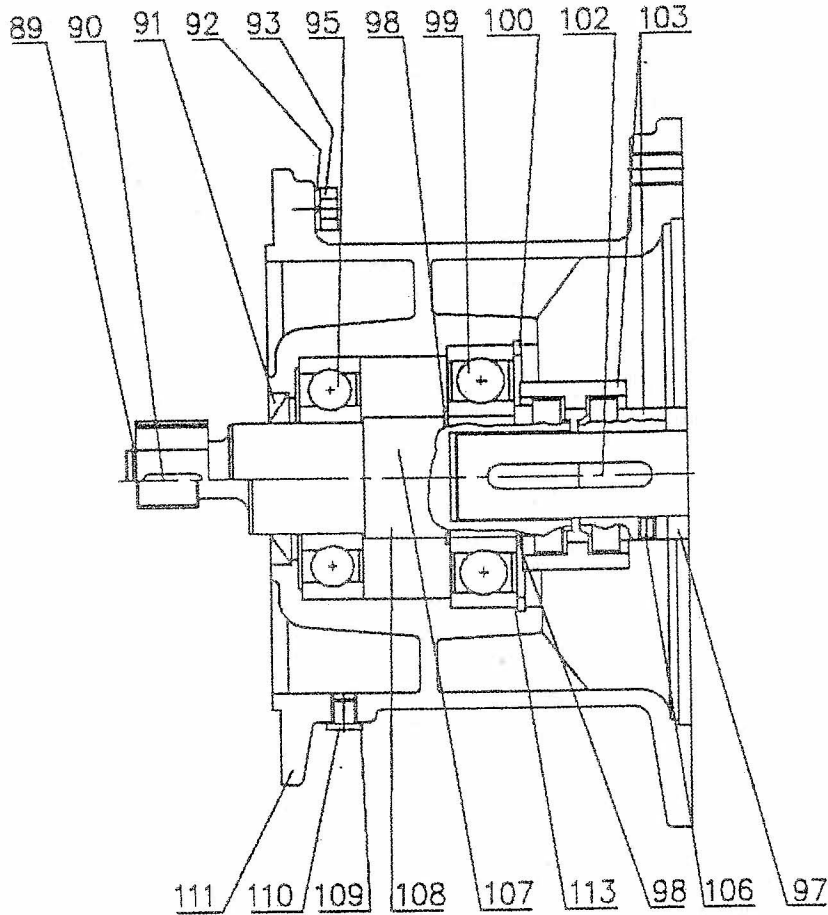
+ RECOMMENDED SPARE PARTS

INPUT ASSEMBLY
56C - 180 TC
Dwg. No. 05-47823



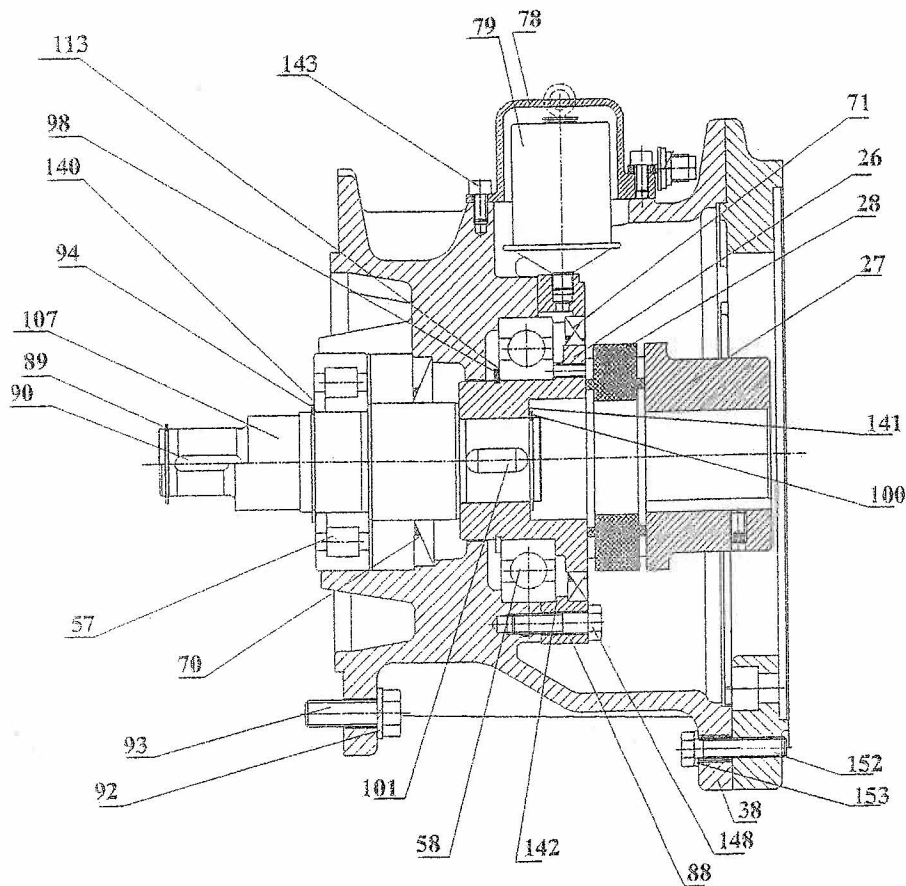
PART NO.	DESCRIPTION	PART NO.	DESCRIPTION
89	RETAINING RING	102	KEY
90	KEY	103	COUPLING
91	SHAFT SEAL	106	SOCKET HEAD SET SCREW
92	WASHER	107	CLUTCH SHAFT
93	HEX HEAD CAP SCREW	108	CLUTCH PINION SHAFT
94	RETAINING RING	109	SEAL
95	CLUTCH SHAFT BEARING	110	OIL PLUG
98	RETAINING RING	111	MOTOR ADAPTER HOUSING
99	CLUTCH SHAFT BEARING	113	SHIM
100	RETAINING RING		

INPUT ASSEMBLY
210TC - 280 TC
Dwg. No. 05-47824



PART NO.	DESCRIPTION	PART NO.	DESCRIPTION
89	RETAINING RING	102	KEY
90	KEY	103	COUPLING
91	SHAFT SEAL	106	SOCKET HEAD SET SCREW
92	WASHER	107	CLUTCH SHAFT
93	HEX HEAD CAP SCREW	108	CLUTCH PINION SHAFT
95	CLUTCH SHAFT BEARING	109	SEAL
97	SPACER	110	OIL PLUG
98	RETAINING RING	111	MOTOR ADAPTER HOUSING
99	CLUTCH SHAFT BEARING	113	SHIM
100	RETAINING RING		

INPUT ASSEMBLY
320TC - 360 TC
Dwg. No. 05-47755



PART NO.	DESCRIPTION	PART NO.	DESCRIPTION	PART NO.	DESCRIPTION
26	COUPLING	88	BEARING COVER	113	SHIM+
27	COUPLING	89	RETAINING RING+	140	SHIM+
28	SPIDER+	90	KEY	141	SHIM+
38	ADAPTER HOUSING	92	LOCK WASHER	142	SHIM+
57	ROLLER BEARING+	93	HEX HEAD CAP SCREW	143	SOCKET HEAD CAP SCREW
58	BALL BEARING+	94	RETAINING RING+	148	HEX HEAD CAP SCREW
70	OIL SEAL+	98	RETAINING RING+	152	HEX HEAD CAP SCREW
71	OIL SEAL+	100	RETAINING RING+	153	LOCK WASHER
78	CARTRIDGE COVER	101	KEY		
79	LUBRICATOR CANISTER+	107	INPUT SHAFT		

+ RECOMMENDED SPARE PARTS